

Multi-Party Supply Chain Capabilities

What Can SPS Do for You?

Suppliers are outsourcing many supply chain functions from international sourcing to manufacturing to warehouse management. These outsourcing providers perform specialized tasks more effectively, and keep the supplier focused on their brand and product lines. They are trusted business partners who are an extension of the supplier's business and operate on their behalf almost every day. However, electronically integrating these parties into the supplier's EDI or Label system to perform tasks on their behalf has been challenging, until now.

As the number of business partners in the supply chain grows, even simple questions such as who should send the Advance Ship Notice (ASN) become difficult to answer, and there are no set standards to follow. These third parties may include:

- Third Party Logistics or warehouses (3PLs)
- Banks
- Consolidators
- Freight forwarders
- Import and export entities
- International sourcing companies

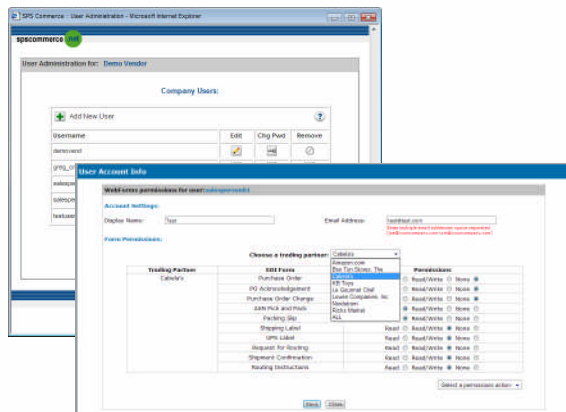
Multi-party supply chains need to assess who receives the information, what privileges are allocated to their 3rd party providers and how can the process be secure and easily accessible. Often the answer is different for each supplier, and the technology must be flexible to accommodate their process – not dictate one.

SPS Commerce's Multi-Party Supply Chain capabilities are designed to help vendors more efficiently work with their domestic and international partners using SPS' **Access Management** or **Filter & Forward** capabilities..

Access Management: Enabling 3rd Parties to Perform Specific Tasks on Your Behalf

With SPS' access management capability, manufacturers can offer their international or third-party supply chain partners limited access to their existing outsourced SPS Commerce EDI and Label service(s). These users could be given permission to view and create certain EDI documents, such as ASNs, on behalf of the supplier for specific trading partners.

For example, a supplier could enable its 3PL to print and affix an order's GS1-128 label onsite, complete the corresponding ASN and send it via EDI to the retailer on behalf of the supplier. The 3PL would not be able to see the corresponding invoice or any other documents. This automated process eliminates the traditional process where the 3PL sends the supplier the packing slip. Then, the supplier must prepare shipping notices and mail barcode labels to the 3PL across town or overseas before the order can be shipped.

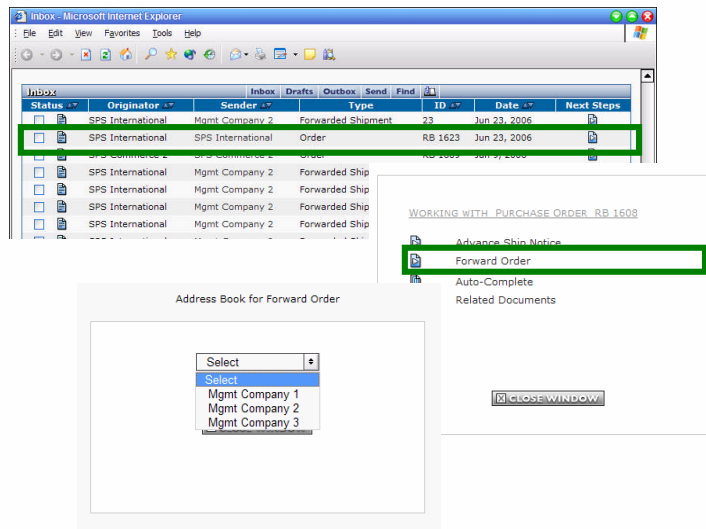


SPS' Access Management capability includes:

- Support for multiple user types and data access rules
- Create user specific logins by:
 - Document Type (i.e., see only Remittance Advices)
 - Trading Partner (i.e., see only documents for Retailer A)
 - "View Only" vs. Edit (i.e., the user can see ASNs, but cannot edit or submit)

**Filter & Forward:
Forward EDI
Documents to Third
Parties Containing
Only The Information
They Need**

Organizations can now use SPS Commerce's services to filter and forward the content of EDI documents (such as purchase orders) to additional locations or third parties. For example, a vendor could electronically forward its retail customer's purchase order (PO) to its international sourcing company. The sourcing company could then use the vendor's SPS Commerce EDI service to forward the PO to the actual factory chosen to manufacture and ship the desired goods to the retailer. At each step, the content of the purchase order can be filtered to exclude confidential information, such as pricing, from the forwarded document.



SPS' Filter & Forward capability includes:

- The ability for a vendor to create a unique "Address Book" for each trading relationship
- Upon receiving a PO, vendors have the option to reply themselves or forward the PO to another receiver in their Address Book
- Based on the needs of the retailer or vendor, information can be removed when forwarding (e.g. Price)
- ASNs can be sent two ways:
 - From the fulfilling site (e.g. factory) to the retailer
 - From the fulfilling site to the original vendor and then the vendor sends the ASN to the retailer